

SANATOGA CREEK WATERSHED

The Sanatoga Creek originates in New Hanover Township and flows in a southwesterly direction through Lower Pottsgrove Township where it meets the Schuylkill River immediately upstream from PECO's Limerick Nuclear Power Plant. Hartenstine Creek is a major tributary of the Sanatoga Creek. It rises in Limerick Township, flows west and meets the Sanatoga Creek in Lower Pottsgrove Township. These townships have grown tremendously over the last decade.



The Sanatoga as it enters the Schuylkill River

The Sanatoga is much more rural in nature than Sprogels Run and is a significantly larger watershed. The watershed consists of 9,955 acres and is primarily agricultural in nature (5,868 acres or 59%). Forested lands are the other primary land use in the

watershed, consisting of 3,648 acres or 37%. Residential use makes up 3.4% of the watershed (340 acres). As shown on the Land Use Map, the headwaters of the Sanatoga Creek are primarily wooded and the region surrounding the Sanatoga Memorial Park is open space as well. Biological communities in the Sanatoga Creek Watershed are very similar to those found in the Sprogels Run Watershed, since the headwaters of the Sanatoga are also surrounded by a mixed deciduous forest. The Hartenstine Creek travels through agricultural lands and some low intensity residential before it meets the Sanatoga Creek in Lower Pottsgrove Township.

The Berks County Conservancy, along with the Greater Pottstown Watershed Alliance, conducted chemical water quality sampling at three sites along Sanatoga Creek and macroinvertebrate sampling at one site. The macroinvertebrate sampling revealed a fairly diverse population of insects, very similar to the population identified at the Sprogels Run sampling station. Over 125 macroinvertebrates were identified at this station along the Sanatoga, with the majority consisting of an equal number of midges and caddisflies. The data collected from the Sanatoga Creek also represents that of a stream capable of sustaining a diverse population of aquatic biota.

There is great potential for a greenway and trail connection project surrounding the Sanatoga Creek and the Schuylkill River. The Montgomery County Lands Trust has recognized this potential and is working with the townships on creating this 'green network'.



Sanatoga Park

Sanatoga Park is the predominant recreational facility in the Sanatoga Creek Watershed. There are also several municipal-owned public parks and a privately-owned facility, the Pottstown Youth Centre.

Tables 10 and 11 list a sample of the numerous historic sites and recreational facilities found in the Sprogels Run and Sanatoga Creek Watersheds.

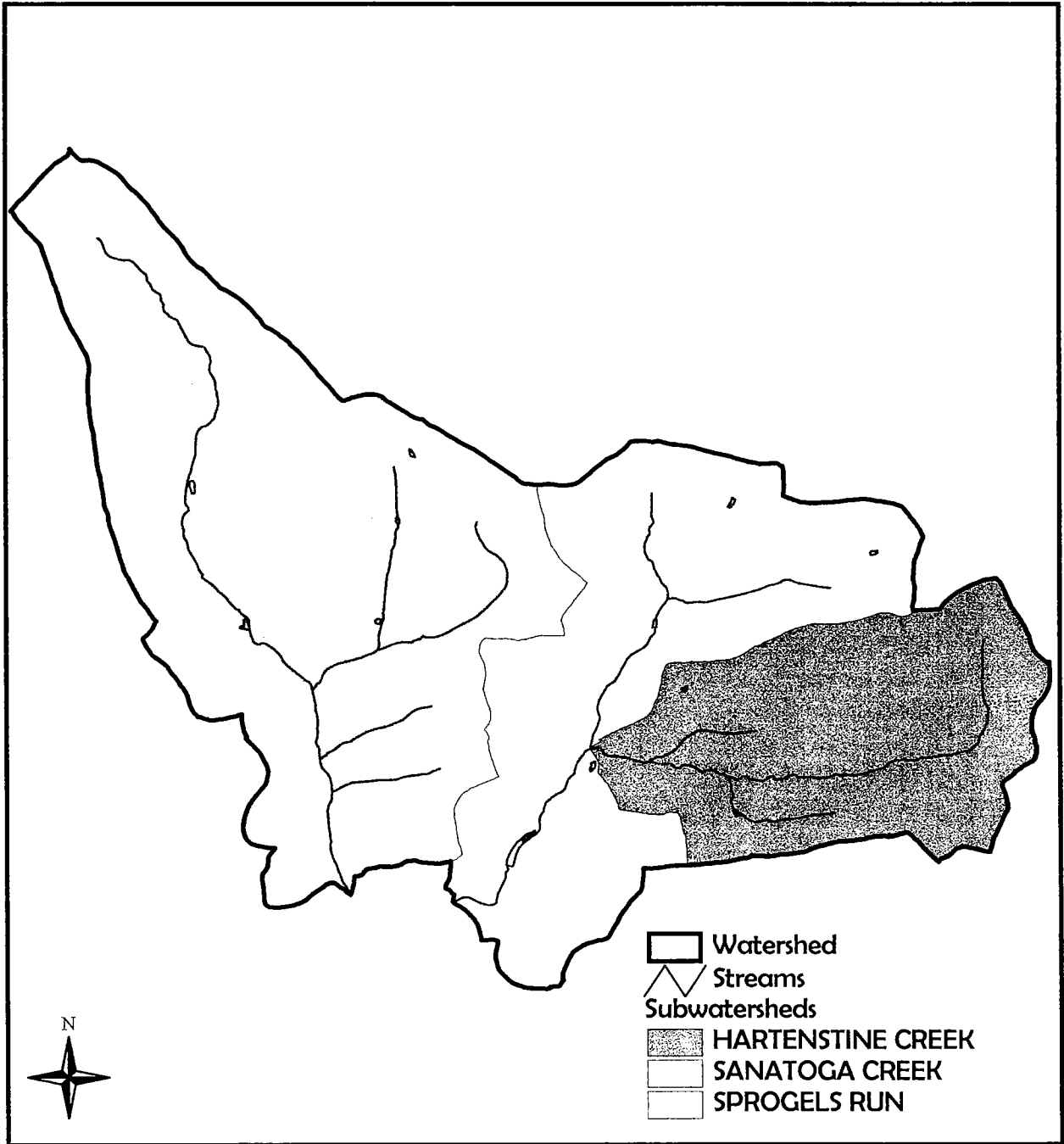
Table 12. A sample of Pennsylvania Historic Resource Properties in the Sprogels Run and Sanatoga Watersheds.

<i>Historic Name</i>	<i>Location</i>	<i>Date</i>
<i>Lower Pottsgrove Twp.</i>		
Wagner, Jonas S. Home	High Street	1885
Bridge	Ridge Pike at Sunnybrook Rd.	1830
Sanatoga Fire House	High Street & Green Lane Rd	1910
Sanatoga Union SS Chapel	High Street	1880
John Brandt House	Pleasant View & Sanatoga Station Rd	1815
Ringling Rocks Park	Mill Road	c.1900
<i>Upper Pottsgrove Twp.</i>		
Hoffman Farm	Farmington Avenue	1890
Halfway House Tavern	Farmington Avenue	1840
Cedar Grove School	Gilbertsville Road	1870
<i>Borough of Pottstown</i>		
The Grubb Mansion	High Street	1895
The Hill School	High Street & Green Lane Rd	1840

Table 13. A sample of Recreational Facilities in the Sprogels Run and Sanatoga Watersheds

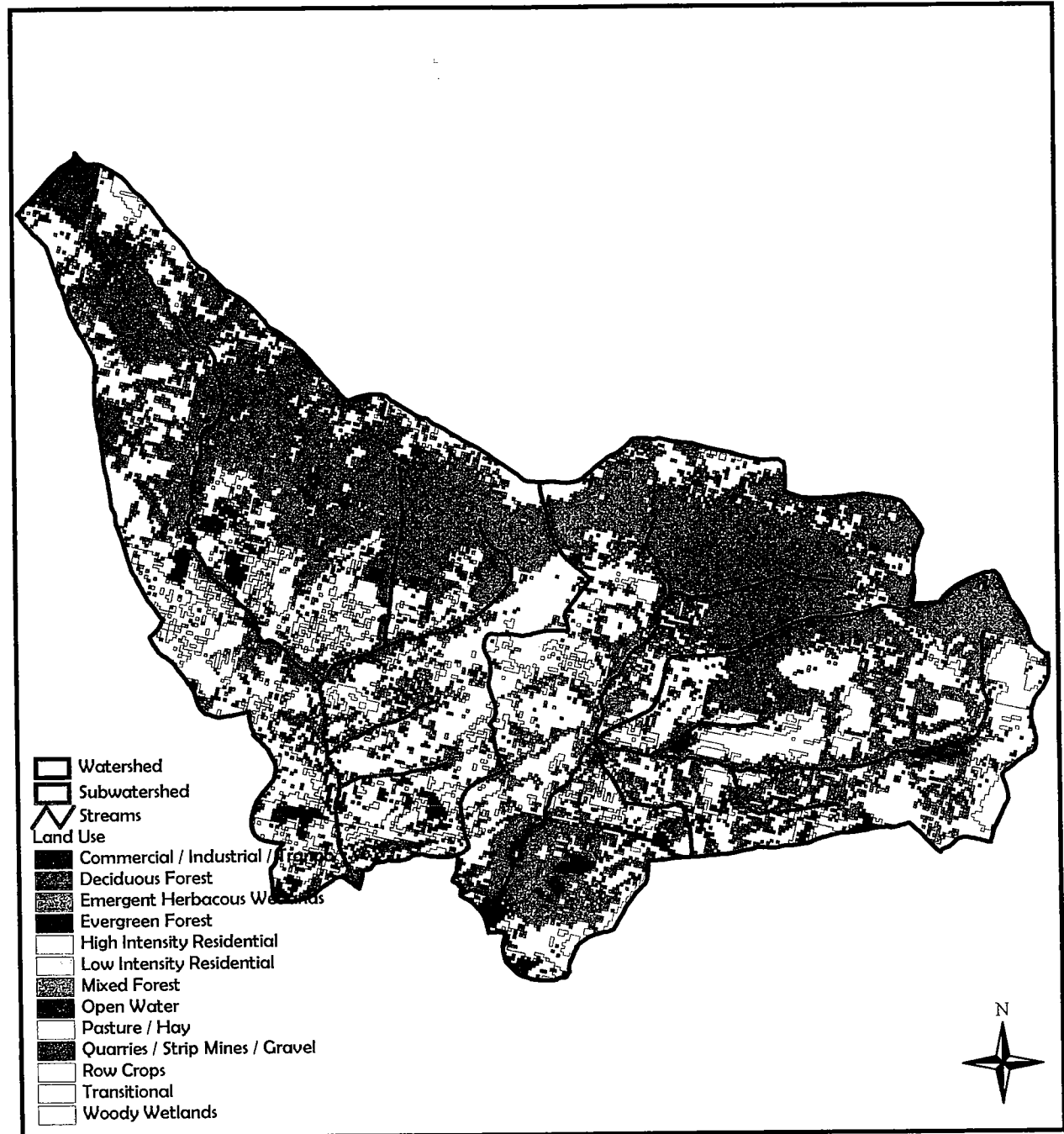
Sprogel's Run		Location	Use
Municipal	<i>Alfred B. Miles Park & Nature Area</i>	Sunnybrook Road	Play area, picnic tables, nature trails - eight acres
Municipal	<i>Gerald G. Richards Community Park</i>	Buckert Road and North Pleasantview Road	Soccer fields, ball fields, basketball court, play area, rest rooms, jogging trail - 32 acres
Municipal	<i>Township Park at Sprogel's Run and Schuylkill</i>	Sanatoga Station Road	Open space - day use
Municipal	<i>Township Park at West Branch of Sprogel's Run</i>	The Woods at Sprougels Run	Open space along creek permanently donated to the municipality.
Private	<i>Sunnybrook</i>	East High Street	Pool, picnic grove, dance pavillion - days and evenings, seasonal
Private	<i>Ringing Rock Park</i>	White Pine Lane	Historic pavillion and picnic grounds, seasonal
Private	<i>Lower Pottsgrove Sportman's Club</i>	Sanatoga Station Road	Rifle and archery range, open space
Private	<i>Northend Swim Club</i>	North Adams St.	Swimming pool, playground, seasonal - summers
Private -	<i>Brookside Country Club</i>	North Adams St.	Golf course -
School - public	<i>Ringing Rocks Elementary School</i>	Kauffman Road	Fieldsports
School - public	<i>Pottsgrove Jr. & Sr. High School</i>	Kauffman Road	Fieldsports, tennis
School - parochial	<i>St. Pius X High School</i>	Keim Road	Fieldsports
School - public	<i>Pottsgrove Intermediate School</i>	Buckert Road	Fieldsports
School - public	<i>Lower Pottsgrove Elementary School</i>	North Pleasant View Road	Fieldsports, playground
Sanatoga			
Municipal	<i>Sanatoga Park</i>	Sanatoga Road	Baseball field, basketball hoops, two tot lots, picnic pavillions, boating and fishing on small lake - 54 acres
Municipal	<i>Winding Brooke Estates</i>	Heather Lane	Open space along creek permanently donated to the municipality.
Municipal	<i>Shire Drive</i>	Rupert Rd to Shire Dr	Open space along creek permanently donated to the municipality.
Private	<i>Pottstown Youth Centre, Inc.</i>	2675 East High Street	Field sports and swimming at the Beulah Land Swim Club - indoor year-round and outdoor seasonal

Sanatoga Creek and Sprogels Run Subwatersheds



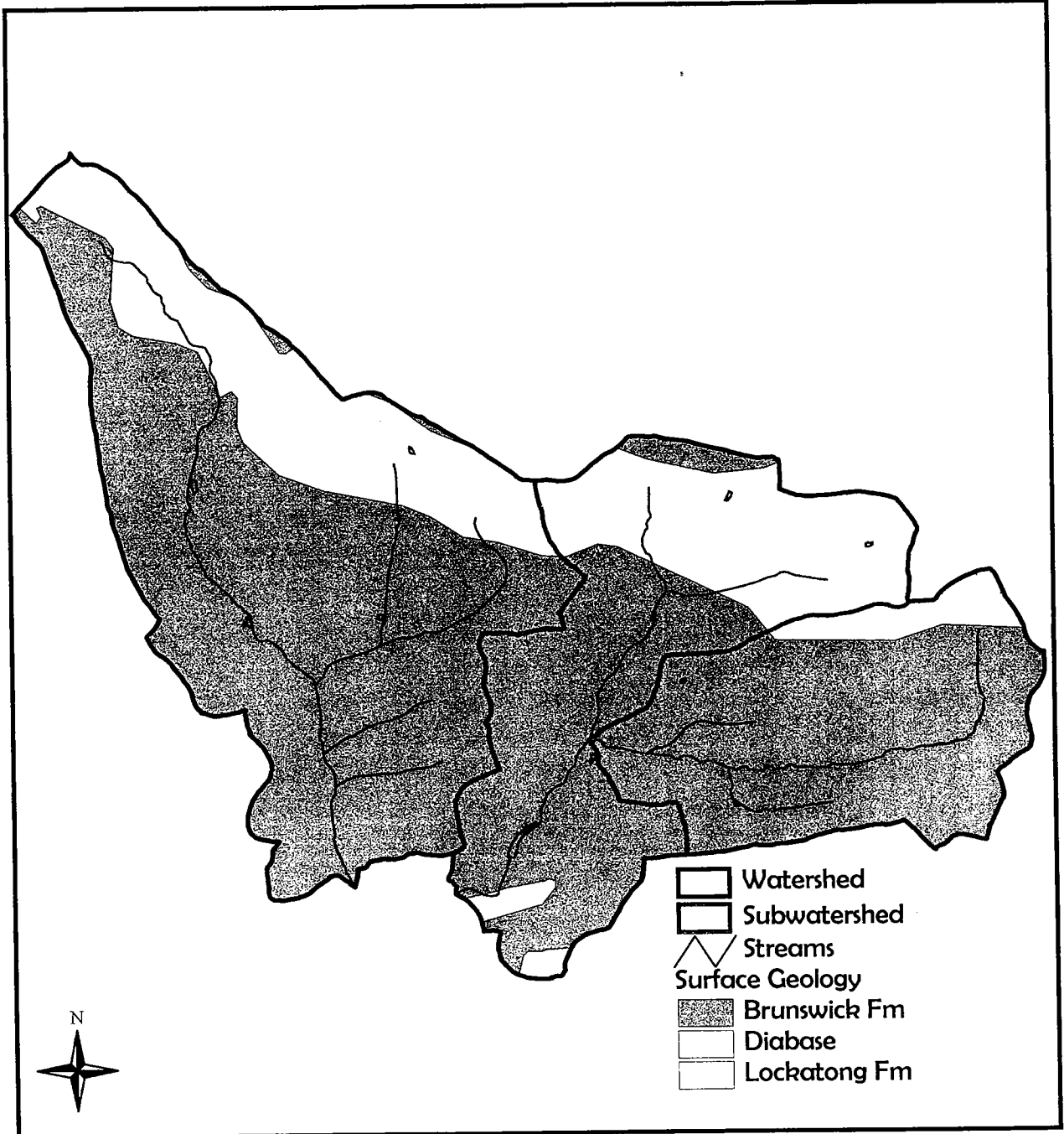
Berks County Conservancy
25 N. 11th Street
Reading, PA 19601
610-372-4992
info@berks-conservancy.org

Sanatoga Creek and Sprogels Run Land Use



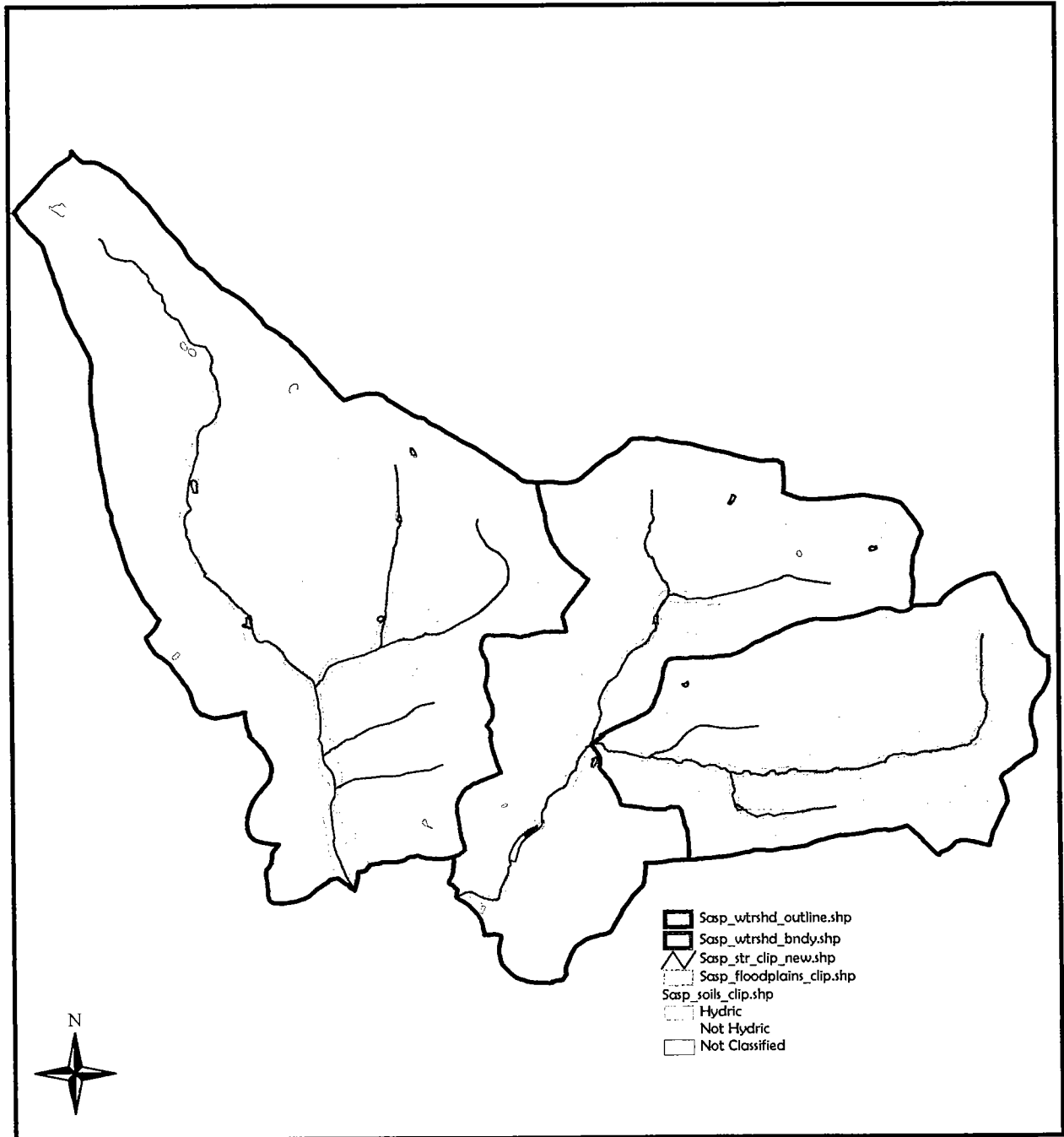
Berks County Conservancy
 25 N. 11th Street
 Reading, PA 19601
 610-372-4992
info@berks-conservancy.org

Sanatoga Creek and Sprogels Run Surface Geology



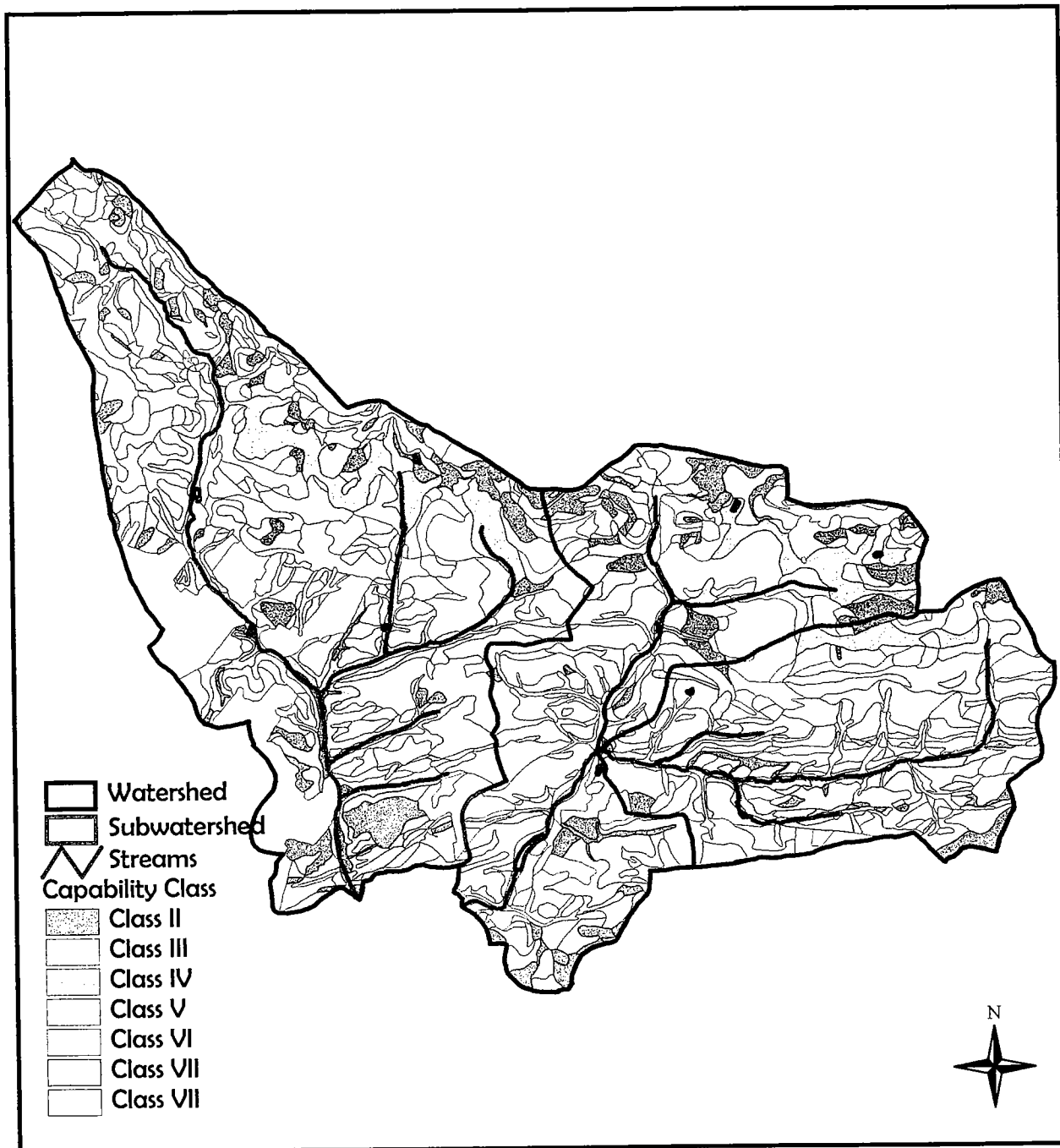
Berks County Conservancy
25 N. 11th Street
Reading, PA 19601
610-372-4992
info@berks-conservancy.org

Sanatoga Creek and Sprogels Run Hydric Soils & Floodplains



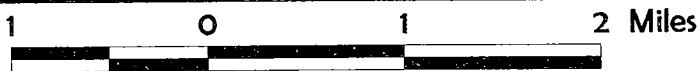
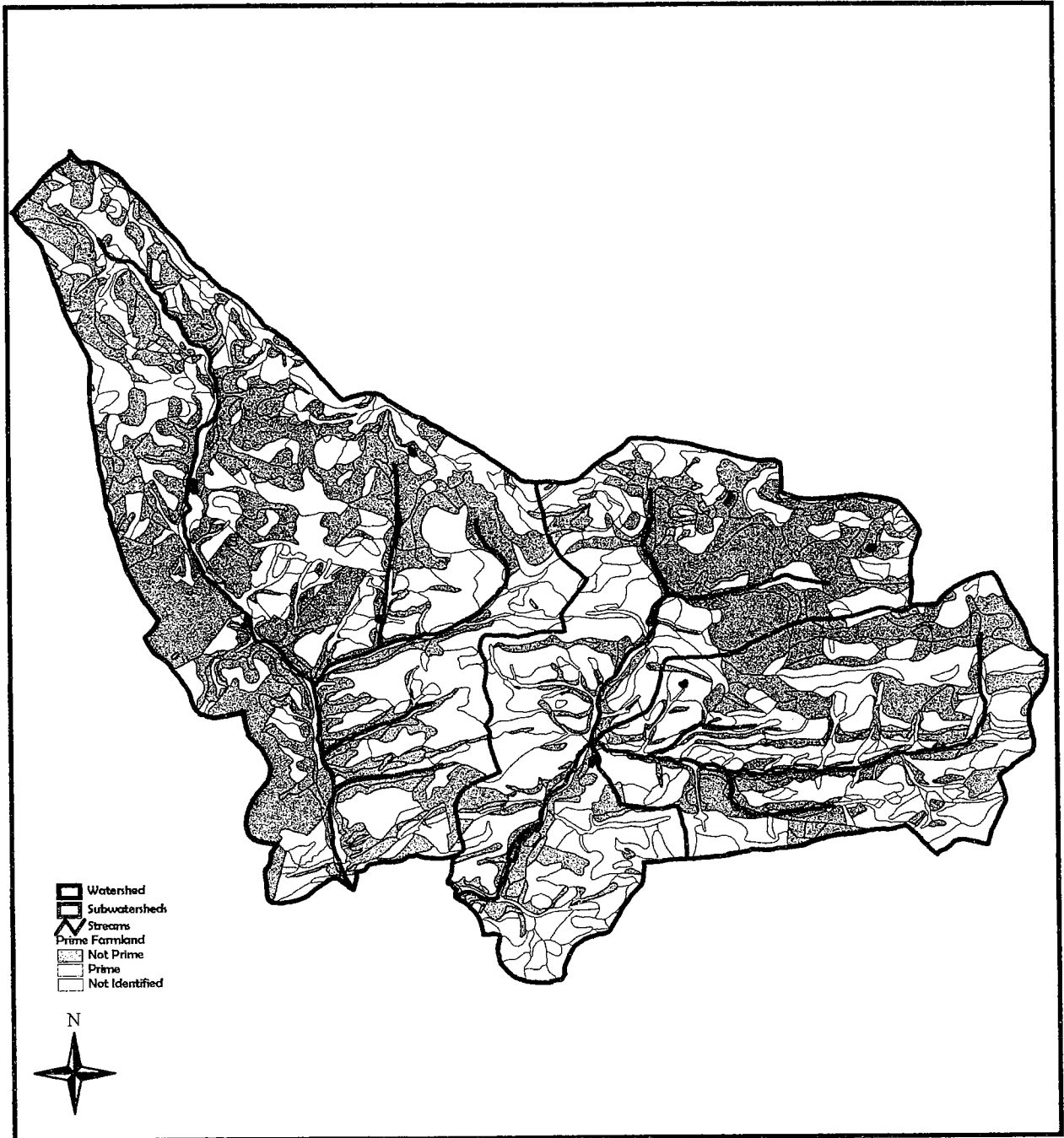
Berks County Conservancy
25 N. 11th Street
Reading, PA 19601
610-372-4992
info@berks-conservancy.org

Sanatoga Creek and Sprogels Run Non-Irrigated Soil Capability Class



Berks County Conservancy
25 N. 11th Street
Reading, PA 19601
610-372-4992
info@berks-conservancy.org

Sanatoga Creek and Sprogels Run Prime Agricultural Lands



Berks County Conservancy
25 N. 11th Street
Reading, PA 19601
610-372-4992
info@berks-conservancy.org

November 2001

BIBLIOGRAPHY

- Berks County Planning Commission, 2000. *Berks Vision 2020, A Comprehensive Plan for the County of Berks (Draft)*.
- Berks County Planning Commission, 2001. *Berks County Data Book*.
- Berks County Planning Commission, 1999. *Natural Areas Inventory of Berks County Update*.
- Berks County Planning Commission, 1994. *Berks County Open Space and Recreation Plan*.
- Berks County Planning Commission, 2000. *Tulpehocken Creek Watershed Act 167 Stormwater Management Plan, Volume 11 Plan Contents (Draft)*
- Berks County Mapping Office, 2001. *Tax Maps of Berks County*.
- Berks County Conservancy, 2001. *Tulpehocken Creek Watershed Conservation Management Plan*.
- Center for Watershed Stewardship, Pennsylvania State University, 2001. *Maiden Creek Watershed, Keystone Project 1999-2000*.
- The Academy of Natural Sciences, Natural Lands Trust, and The Conservation Fund, 2000. *Schuylkill Watershed River Conservation Plan (Draft)*
- The Academy of Natural Sciences, 1998. *Manatawny Creek, Sprogels Run and Sanatoga Creek Watersheds Database Development Project*
- Penn State Cooperative Extension, 2001. *Biodiversity*
- PA Department of Conservation and Natural Resources, 2001. *Watershed Planning, River Conservation Plan Outline*.
- PA Department of Environmental Protection, 2001. *Water Quality Anti-degradation Guidance Manual*
- PA Department of Environmental Protection, 2001. *Environmental Futures Planning Process Draft Report*
- PA Department of Environmental Protection, 1998-1999. *State Water Plan 3D Manatawny. Stream Assessment Data Field Forms*.
- PA Department of Environmental Protection and Alliance for the Chesapeake Bay, 1997. *Wetland and Riparian Stewardship in Pennsylvania*.
- PA Fish and Boat Commission, 1992. *Coldwater Tributaries of the Manatawny Creek: Stream Survey Reports*.
- Schmid & Company, Inc., 1996. *Wetlands and Potential Impacts in the Vicinity of the Proposed Wissahickon Spring Water, Inc. Well*.

U.S. Department of Agriculture, 1970. *Soil Survey of Berks County, Pennsylvania.*

U.S. Department of the Interior, U.S. Fish and Wildlife Service, 1996. *Endangered and Threatened Wildlife and Plants.*

U.S. Geological Survey, 2001. *Surface Water Data for Pennsylvania: Streamflow Data*

U.S. Geological Survey, 1988. *Water Resources of Oley Township, Berks County, Pennsylvania.*

Bining, Arthur C., 1973. *Pennsylvania Iron Manufacture in the Eighteenth Century.*

Clausen, W. Edmunds, 1970. *Journey Through Our Land.*

Pendleton, Philip E., 1994. *Oley Valley Heritage, the Colonial Years: 1700-1775*

National Trust for Historic Preservation, 1997. *Saving America's Countryside, A Guide to Rural Conservation. Second Edition.*

Websites:

Berks County Conservancy: www.berks-conservancy.org

Natural Lands Trust: www.natlands.org

Nature Conservancy: <http://nature.org>

National Register of Historic Places: www.cr.nps.gov/nr

PA Department of Conservation and Natural Resources: www.dcnr.state.pa.us

PA Department of Environmental Protection: www.dep.pa.us

Pennsylvania State Data Access: www.pasda.psu.edu/

Penn State Cooperative Extension: www.extension.psu.edu

Pine Creek Valley Watershed Association: pinecreekwatershed.com

Schuylkill River Watershed Conservation Plan: www.schuylkillplam.org

U. S. Department of Agriculture: www.usda.gov

U. S. Fish and Wildlife Service: www.fws.gov

U. S. Geologic Survey: www.usgs.gov